


CVI PC2000 Software

Program Parameters and Monitor Data



CVI PC2000 software (Windows compatible) is a user friendly tool able to program tightening cycles, collect and display results and curves from all  tightening controllers in real time.

The Advanced network version allows the connection of up to 32 controllers in RS422 mode and many more through an Ethernet link.

Real time control mode

- Display all stations connected
- Display and save results
- Display tightening reports
- Print results after each tightening or from date to date

Programming mode

- General parameters of controllers: peripherals, fieldbuses, Ethernet,
- Tightening cycles, up to 250
- Electric brushless tool features
- Downloading of all parameters to stations

Statistical analysis mode

- Standards: ISO, CNOMO, NF
- Display and print:
 - Histograms
 - SPC
 - Control charts, mean, range, standard deviation

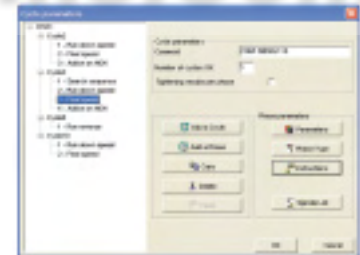
Maintenance mode

- Access to tool counters, partial number of cycles and total number of cycles performed by the tool
- Test mode to check torque transducer, angle encoder, brushless motor, etc...
- Complete backup/restore of Stations



Displaying of all stations programmed
 Access to main functions with soft key

Friendly Interface



Cycles and phases programming mode

Easy Control



From torque control up to yield point strategy

Complete Statistical Package



MODEL	PART NUMBER
CVIS/CVIC PC2000 1 install	615 927 521 0
CVIS/CVIC PC2000 5 install	615 927 534 0
CVIS/CVIC PC2000 25 install	615 927 536 0

MODEL	PART NUMBER
CVI PC2000 standard 1 install	615 927 522 0
CVI PC2000 standard 5 install	615 927 526 0
CVI PC2000 standard 25 install	615 927 537 0

MODEL	PART NUMBER
CVI PC2000 advance 1 install	615 927 523 0
CVI PC2000 advance 5 install	615 927 535 0
CVI PC2000 advance 25 install	615 927 538 0



Secure Info into Databases



*Through Ethernet and in real time; CVI-net is a unique simple software to collect and save tightening results and curves into a SQL Data Base.**

*CVI-NET is a multilingual windows software, compatible with the most common data bases, **SQL server, Interbase, Oracle, ACCESS, etc.**

CVI-NET software includes two applications software: CVI-collector and CVI-Viewer.

CVI-Collector

- Single software installation on the main server
- Data collection linked to Identification Number as station number / part number / tools number/ a free field for special needs
- Auto uploading of missing data (FIFO inside controllers)
- Overview of all controllers connected

CVI-Viewer

- Multi-user installation
 - View tightening results
 - View tightening curves
 - Customized report:
 - Date range filtering
 - Data linked to an Identification Number
 - View of maintenance information
- CVI-Net save more than 40 parameters plus the results at the end of each tightening.

Real time quality control of the network

Alarm in case of disconnection and FIFO inside controllers.
 Automatic uploading of missing data from controllers.

Traceability

All results with Identification Number can be exported to another data base for long time saving. The display of one or more curves allows you to analyze and make comparison of tightening.

Printing report

Printing of all tightening of a vehicle or a component by scanning the bar code number.

Easy Control



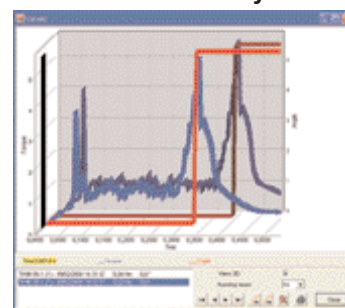
Ethernet connection manager

Friendly Interface



Filtering of results, per VIN number, Per date, type of results, etc...

100% Security



3D Curves screen, display of one or several curves

MODEL	PART NUMBER
CVI-net 1 controller	615 927 555 0
CVI-net 10 controllers	615 927 549 0
CVI-net 25 controllers	615 927 550 0
CVI-net 50 controllers	615 927 551 0

